

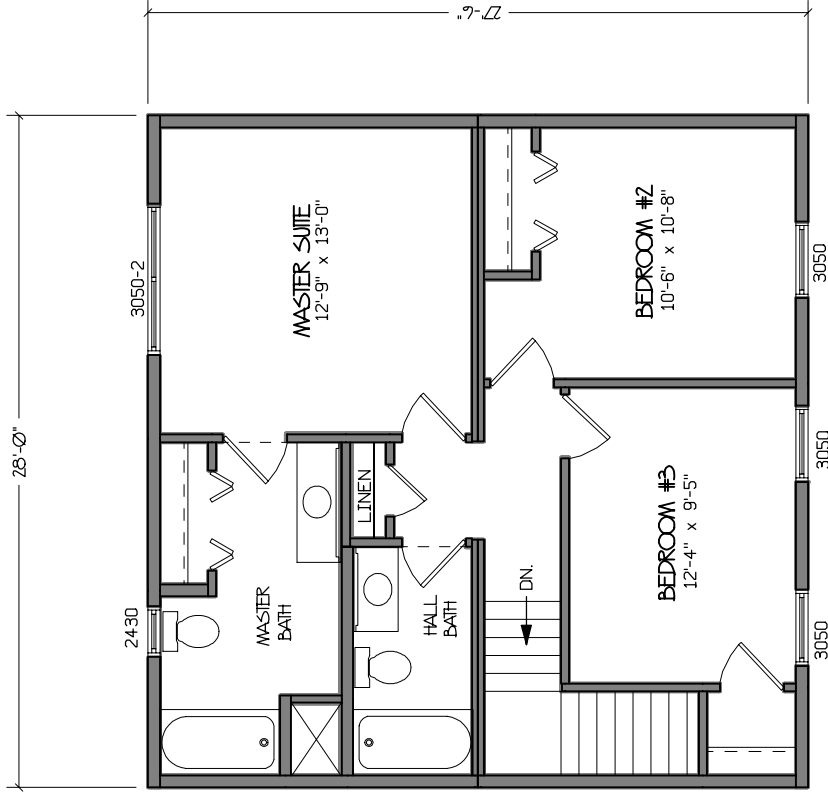
PLAN PB5620	R.F.-CABINETS
STYLE: TWO STORY	KITCHEN 18
BEDROOMS: 3	MASTER BATH 6
BATHS: 2 1/2	HALL BATH 3.5
APPROX. 1540 SQ. FT.	HALF BATH N/A
770/770 SQ. FT.	
ROOF PITCH: 5/12	

REV.	DATE	DRAWN	DESCRIPTION	PAGE DESCRIPTION			DATE
				FIRST FLOOR SALES PLAN			09-26-02
				PB5620			DRAWN G.J.H.
				NOT TO SCALE			SEE REVISION
							of
							NOTE

PINNACLE BUILDING SYSTEMS

ALL DRAWINGS ARE THE PROPERTY OF P.B.S. AND SHALL NOT BE REPRODUCED OR COPIED

P.O. BOX 1129, 1103 MAPLE ST.
BRISTOL, IN 46507



PLAN PB5620	R.F.-CABINETS
STYLE: TWO STORY	KITCHEN 18
BEDROOMS: 3	MASTER BATH 6
BATHS: 2 1/2	HALL BATH 35
APPROX. 1540 SQ. FT.	HALF BATH N/A
770/770 SQ. FT.	
ROOF PITCH: 5/12	

REV.	DATE	DRAWN	DESCRIPTION

PINNACLE BUILDING SYSTEMS

P.O. BOX 1129, 1103 MAPLE ST.
BRISTOL, IN 46507

ALL DRAWINGS ARE THE PROPERTY OF P.B.S.
AND SHALL NOT BE REPRODUCED OR COPIED

PAGE DESCRIPTION	SECOND FLOOR SALES PLAN
DATE	1-27-00
DRAWN	G.J.H.
SEE	REVISION
OF	NOTE

NOT TO SCALE